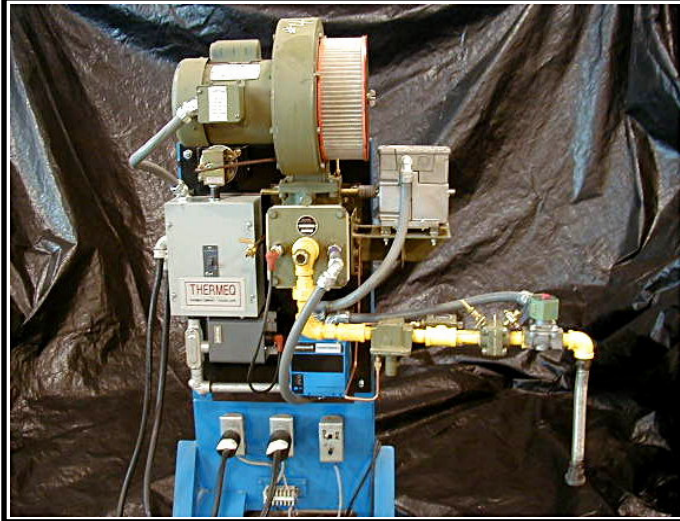


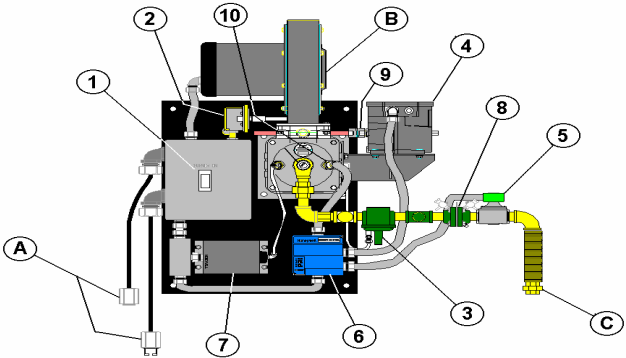
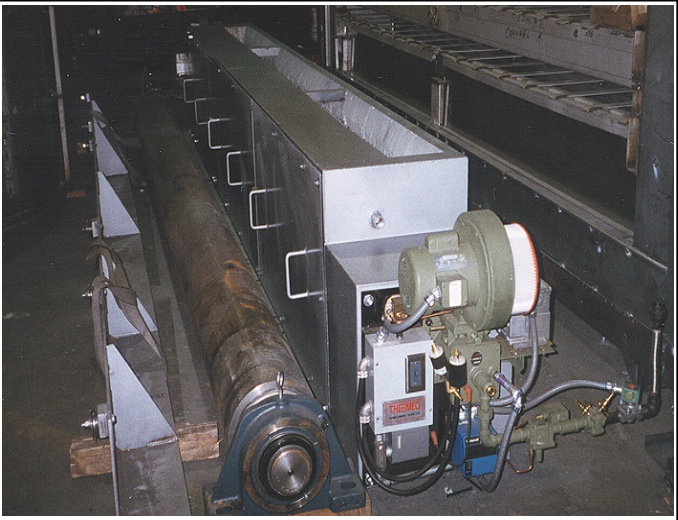
# THERMEQ

## PACKAGE BURNER



Left - Package burner that is installed on one of our burner test stands. Package burners have been installed for both direct fired and radiant tube applications.

Right - Package burner used in a belt preheater. Application complete with ratio control, metering taps, and quick disconnecting features.



**Features:**

- 1. Localized Panel with Circuit Breaker
- 2. Combustion Air Pressure Switch
- 3. Gas to Air Ratio Regulator
- 4. Modulated Firing Motor
- 5. Gas Safety Shut-off Valve
- 6. Flame Safety Relay
- 7. Ignition Transformer with Igniter
- 8. Metering Orifice With Petcocks
- 9. Direct Coupled Motor to Shaft
- 10. Burner Set-up Prior to Shipping

**Options:**

- A. Quick Disconnecting Power & Signal Cable
- B. Flex Piping with Union
- C. Flex Piping with Union

# THERMEQ

## PACKAGE BURNER

### *Feature / Benefits*

- **Localized Panel with Circuit Breaker** - The design incorporates an electrical panel with a circuit breaking switch mounted at the burner.
- **Combustion Air Switch** - The burner includes a locally mounted combustion air switch that interlocks with the gas safety solenoid. This interlock provides for a NFPA approved system.
- **Gas to Air Ratio Regulator** - The system is equipped with a well proven ratio regulator to produce correct firing ratios throughout the range of the burner.
- **Modulated Firing Motor** - A standard 4-20mA modulating motor is provided. Modulated firing provides a smooth temperature curve.
- **Gas Safety Shut-off Solenoid** - A safety shut-off solenoid is installed in the gas piping, shutting off in the event of a flame extinguishing and/or combustion air pressure drop.
- **Flame Safety Relay** - A flame supervising relay is equipped with an internal programmer for ignition sequences and purge cycles to control the flame safety interlock.
- **Ignition Transformer with Igniter** - The ignition transformer is locally mounted on the base plate.
- **Metering Orifice with Petcocks** - A metering orifice equipped with petcocks is installed in the burner gas line.
- **Direct Coupled Motor to Shaft** - The design incorporates a motor direct coupled to the valve shaft increasing reliability/removes unnecessary linkages.
- **In-house Burner Set-up** - All package burners are tested prior to shipping. Testing includes setting up the air/gas ratio, firing the burner through its entire range, and verifying the operation of all safety.

### *Options*

- **Quick Disconnecting Power and Signal Cables** - Quick disconnecting power and signal cables are available to reduce maintenance time during repairs by allowing for fast removal/replacement of the burner.
- **Air Filtration System** - An air filtration system that removes contaminants from the combustion air can be provided.
- **Flex Piping with Union** - Flexible piping on the package burner is available. This flexible piping reduces connection time during installation and maintenance.



**THERMEQ GROUP** is an engineering and fabrication organization that serves industry by offering our customers technology, equipment, and service. **THERMEQ GROUP** has a capable staff of engineers and craftsmen that have both technical knowledge and practical field experience. **THERMEQ GROUP** provides our customers with high quality equipment, fast delivery, and trained technicians.



## **CORPORATE OFFICE AND FACTORY**

**1070 Disher Drive Waterville, Ohio 43566**

**Tele: (419) 878-4400 Fax: (419) 878-4455**

**WWW.THERMEQ.COM**