

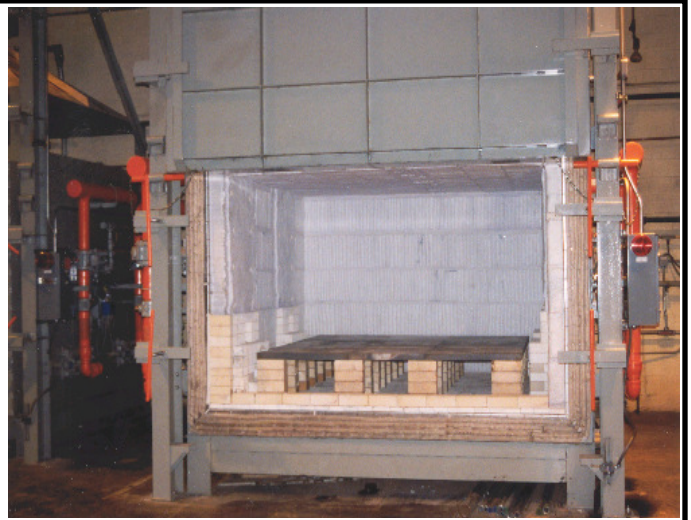
THERMEQ

CUSTOM FABRICATION & ASSEMBLY



Left - 16' diameter duct for steel plant.

Right - High temperature batch annealing kiln with a chain driven overhead door.



Left - High speed fluorescent tube conveyor.

THERMEQ

CUSTOM FABRICATION & ASSEMBLY

Feature / Benefits

THERMEQ is a manufacturing facility that offers its customers a single source for their complete requirements. This single sourcing allows us to provide our customers with

- High Quality
- Turnkey Projects
- Quick Turn-Around
- Low Costs
- Design Capabilities
- Innovative Solutions
- On-Time Delivery
- Steel and Alloy Fabrication
- Welding
- Dynamic Fan Balancing
- Electrical Wiring
- Piping and Leak Testing
- Refractory
- Painting
- Engineering Service
- Field Installation
- High Bay Facility
- Design Capabilities
- Equipment Assembly
- Testing
- Filter Boxes

THERMEQ can also provide:

- Lehrs
- Ovens
- Furnaces
- Furnace Rebuilds
- Conveyors
- Mezzanines
- Ladders
- Stairs
- Walkways
- Handrails
- Construction Steel
- Hoppers
- Dumpsters
- Tanks
- Blowers
- Impellers
- Balancing
- Racks
- Fixtures
- Recuperators
- Radiant Tubes
- Pipe Trains
- Burners
- Truck Repair
- Drive Tables
- Electrical Panels



THERMEQ GROUP is an engineering and fabrication organization that serves industry by offering our customers technology, equipment, and service. **THERMEQ GROUP** has a capable staff of engineers and craftsmen that have both technical knowledge and practical field experience. **THERMEQ GROUP** provides our customers with high quality equipment, fast delivery, and trained technicians.



CORPORATE OFFICE AND FACTORY

1070 Disher Drive Waterville, Ohio 43566

Tele: (419) 878-4400 Fax: (419) 878-4455

WWW.THERMEQ.COM